

# FEIDER

## FRVC1

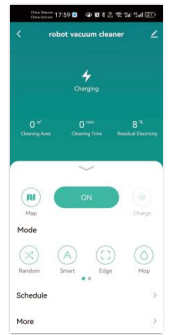
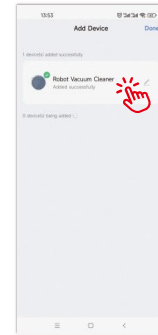
# APP INSTRUCTIONS



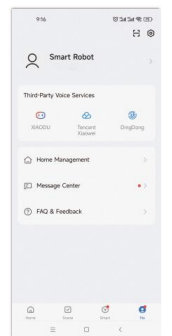
Smart Life

\*This app is subject to real thing.  
We have right to update the app.  
Any change without prior notice.

- 8 Click on "Robot vacuum cleaner", as shown in the figure to enter control interface.



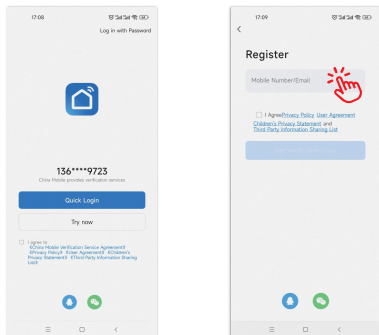
- 9 A page will be displayed, as shown in the figure, if the device makes no response. Click on "Switch Pairing Mode" to view the reason, or click on "Retry" to add the device again.
- 10 To unbind the device, click on "Me > Home Management > Home name > Delete Home" at the lower right corner, as shown in the figure. (Note: to re-connect the device after unbinding it, repeat the previous operations)



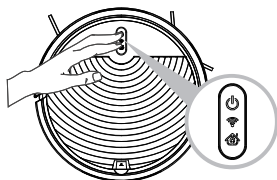
1. Download the App by scanning the QR code with your cell phone or Search for "Smart Life" in the mobile app market and download the app  
Before using this function make sure your cell phone has been connected to WiFi.



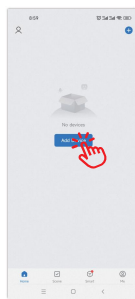
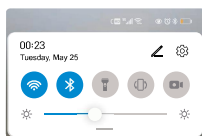
2. Open "Smart Life" App and register a new account or use an existing account.



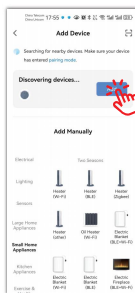
3. WiFi fast connection: Press and hold the button and button at the same time for more than 3 seconds, the robot will make a "beep" warning sound, release the button, the blue indicator light of the button will flash quickly, the robot is in WiFi fast connection mode.



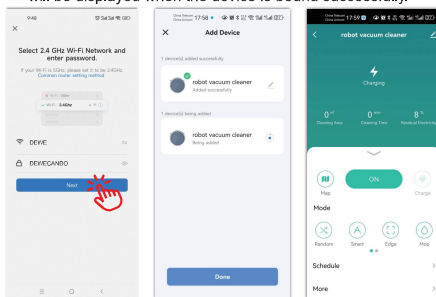
4. After register, then Connect WiFi (confirm 2.4Ghz) and turn on Bluetooth. Proceed to the next step "Add Device".



5. Go to the next step "Add Device" or click on the "+" sign in the supper right corner and select "Add" the detected product on the next page.

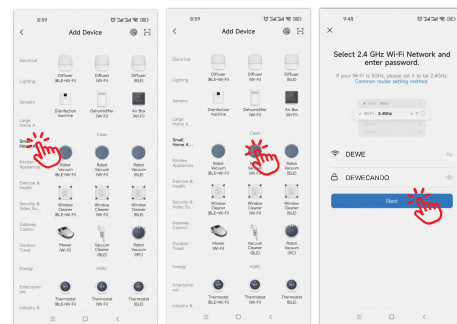


6. Make sure the name of your home WiFi, and enter the WiFi password and click on NEXT (note: only 2.4G WiFi is available), as shown in the figure. A control interface will be displayed when the device is bound successfully.



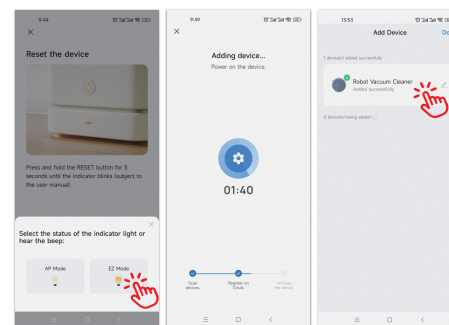
7. Rapid network distribution mode:

Select and click on "small Home Appliances".Then select and click on "Robot Vacuum".



Make sure the WiFi LED indicator is flashing, and check "Confirm indicator rapidly blink", and click on NEXT for network connection and on Finish after device is added successfully.

It may take several or dozens of seconds to connect the device to WiFi network, depending on the signal strength.



**Reset WiFi:** In case of connection timeout or before connecting another cell phone, first switch on the device. Press and hold the button and button at the same time for more than 3 seconds, then re-connect it to WiFi network.